



## Technical Data Sheet

**MATERIAL:** Cellulose, cyanoethylated

**CATALOG NUMBER:** 091

**CAS NUMBER:** 9004-41-5

**DESCRIPTION:** Cyanoethyl cellulose

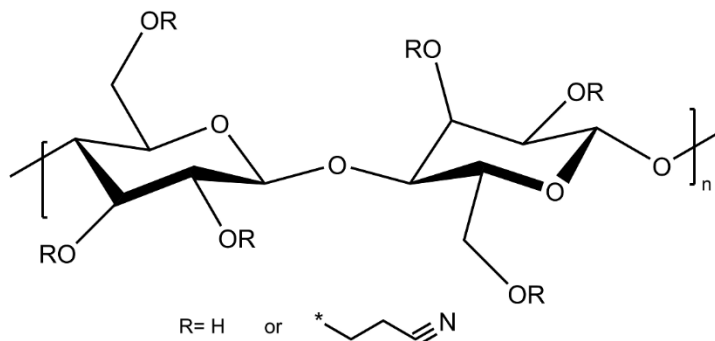
**FORMULA:** Unspecified

**TYPICAL PROPERTIES:**

Appearance:	Powder
Glass transition temp:	180°C
Flashpoint:	375°F
Solubility:	Acetone, chloroform, pyridine

**GENERAL INFORMATION:** Highly cyanoethylated cellulose. Prepared by the reaction of cellulose with acrylonitrile.

**STRUCTURE:**



Technical information and data regarding the composition, properties or use of the products described herein is believed reliable. However, no representation or warranty is made with respect thereto except as made by Sp<sup>2</sup> in writing at time of sale. Sp<sup>2</sup> cannot assume responsibility for any patent liability which may arise from the use of any product in a process, manner or formula not designed by Sp<sup>2</sup>.