

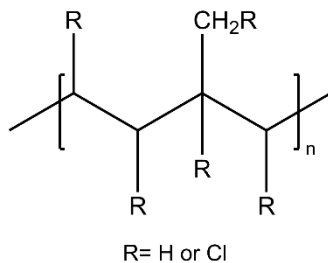


Technical Data Sheet

MATERIAL:	Polyisoprene, chlorinated	
CATALOG NUMBER:	106	
CAS NUMBER:	68441-58-7	
DESCRIPTION:	Rubber, chlorinated	
FORMULA:	Unspecified	
TYPICAL PROPERTIES:	Appearance:	Powder
	Chlorine content:	65%
	Approx Mw:	450,000 [GPC]
	Refractive index:	n_D^{20} 1.554
	Density:	1.63
	Solubility:	Aromatic and chlorinated hydrocarbons, esters, THF

GENERAL INFORMATION: Chlorinated rubbers are widely used in paints, adhesives and printing inks. Its most important advantages are chemical inertness and excellent film-forming properties.

STRUCTURE: The reactions which occur during the chlorination of polyisoprene are complex and include addition, substitution and cyclization. A typical structure would be as follows:



Technical information and data regarding the composition, properties or use of the products described herein is believed reliable. However, no representation or warranty is made with respect thereto except as made by Sp² in writing at time of sale. Sp² cannot assume responsibility for any patent liability which may arise from the use of any product in a process, manner or formula not designed by Sp².