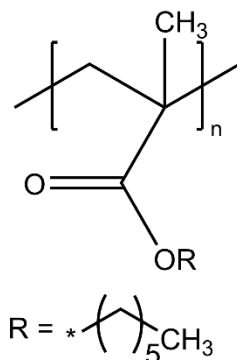




Technical Data Sheet

MATERIAL:	Poly(n-hexyl methacrylate)
CATALOG NUMBER:	217
CAS NUMBER:	25703-79-1
DESCRIPTION:	Homopolymer of n-hexyl methacrylate, solution in toluene
FORMULA:	$(C_{10}H_{18}O_2)_x$
TYPICAL PROPERTIES:	
Appearance:	Liquid
Approx Mw:	400,000 [GPC]
Density:	1.007
Glass transition temp:	-5°C
Refractive index:	n_D^{20} 1.4813
Flash point:	39°F
Solubility parameter:	8.6
Solubility:	Benzene, MEK, THF, toluene
GENERAL INFORMATION:	Homopolymer of n-hexyl methacrylate.

STRUCTURE:

Technical information and data regarding the composition, properties or use of the products described herein is believed reliable. However, no representation or warranty is made with respect thereto except as made by Sp² in writing at time of sale. Sp² cannot assume responsibility for any patent liability which may arise from the use of any product in a process, manner or formula not designed by Sp².