

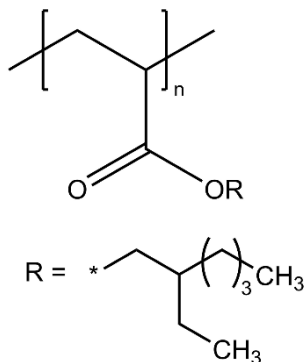


Technical Data Sheet

MATERIAL:	Poly(2-ethylhexyl acrylate)	
CATALOG NUMBER:	249	
CAS NUMBER:	9003-77-4	
DESCRIPTION:	2-Ethylhexyl acrylate homopolymer, solution in toluene	
FORMULA:	$(C_{11}H_{20}O_2)_x$	
TYPICAL PROPERTIES:	Appearance:	Clear, colorless, viscous liquid
	Approx Mw:	90,000 [GPC]
	Glass transition temp:	-50°C
	Flash point:	40°F
	Solubility:	Aromatic hydrocarbons, esters, ketones, THF

GENERAL INFORMATION: 2-Ethylhexyl ester of acrylic acid. Typical application areas include paint and adhesive formulations.

STRUCTURE:



Technical information and data regarding the composition, properties or use of the products described herein is believed reliable. However, no representation or warranty is made with respect thereto except as made by Sp² in writing at time of sale. Sp² cannot assume responsibility for any patent liability which may arise from the use of any product in a process, manner or formula not designed by Sp².