

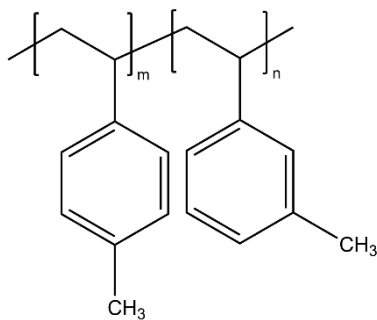


Technical Data Sheet

MATERIAL:	Poly(vinyl toluene), mixed isomers	
CATALOG NUMBER:	261	
CAS NUMBER:	9017-21-4	
DESCRIPTION:	Homopolymer of vinyl toluene, 60% meta; 40% para	
FORMULA:	$(C_9H_{10})_x$	
TYPICAL PROPERTIES:	Appearance:	Beads
	Approx Mw:	80,000 [GPC]
	Solubility:	Benzene, THF, toluene

GENERAL INFORMATION: Prepared by the free radical polymerization of vinyl toluene.

STRUCTURE:



Technical information and data regarding the composition, properties or use of the products described herein is believed reliable. However, no representation or warranty is made with respect thereto except as made by Sp² in writing at time of sale. Sp² cannot assume responsibility for any patent liability which may arise from the use of any product in a process, manner or formula not designed by Sp².