



## Technical Data Sheet

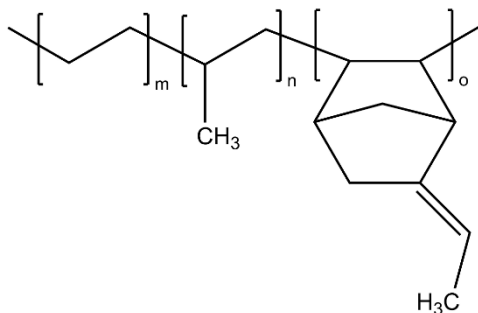
<b>MATERIAL:</b>	Ethylene/propylene/diene terpolymer
<b>CATALOG NUMBER:</b>	359
<b>CAS NUMBER:</b>	25038-36-2
<b>DESCRIPTION:</b>	Random terpolymer of ethylene, propylene and ethylidene norbornene.
<b>FORMULA:</b>	$(C_9H_{12})_m(C_3H_6)_n(C_2H_4)_o$

### TYPICAL PROPERTIES:

Appearance:	Slab
Ethylene content:	50%
Diene content:	4%
Mooney viscosity:	50 (100°C)
Density:	0.86
Glass transition temp:	-50°C
Flash point:	572°F
Solubility:	1,2,4-trichlorobenzene

**GENERAL INFORMATION:** This sulfur-curable elastomer is typically used for injection molding applications where low temperature performance is required. It has excellent resistance to deterioration by weather, ozone, oxygen, chemicals and heat.

### STRUCTURE:



Technical information and data regarding the composition, properties or use of the products described herein is believed reliable. However, no representation or warranty is made with respect thereto except as made by Sp<sup>2</sup> in writing at time of sale. Sp<sup>2</sup> cannot assume responsibility for any patent liability which may arise from the use of any product in a process, manner or formula not designed by Sp<sup>2</sup>.