

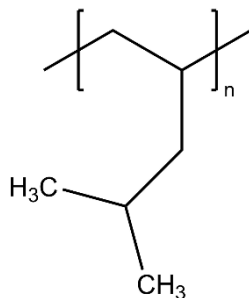


Technical Data Sheet

MATERIAL:	Poly(4-methyl-1-pentene)
CATALOG NUMBER:	384
CAS NUMBER:	25068-26-2
DESCRIPTION:	Homopolymer of 4-methyl-1-pentene
FORMULA:	$(C_6H_{12})_x$
TYPICAL PROPERTIES:	
Appearance:	Beads
Melt index:	8 g/10min
Density:	0.835
Refractive index:	n_D^{20} 1.463
Melting point:	235°C
Vicat softening point:	185°C
Glass transition temp:	31°C
Solubility:	Aliphatic and cycloaliphatic hydrocarbons (all above 80°C)

GENERAL INFORMATION: Poly(4-methyl-1-pentene) is predominantly isotactic and crystalline. With a melting point of 235°C and a high vicat softening point, poly(4-methyl-1-pentene) lends itself to applications where transparency and heat resistance are required, e.g. medical and laboratory ware, ovenware, baking cartons, release paper and heat-resistant wire and cable.

STRUCTURE:



Technical information and data regarding the composition, properties or use of the products described herein is believed reliable. However, no representation or warranty is made with respect thereto except as made by Sp² in writing at time of sale. Sp² cannot assume responsibility for any patent liability which may arise from the use of any product in a process, manner or formula not designed by Sp².