



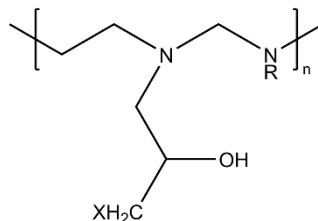
Technical Data Sheet

MATERIAL:	Polyethyleneimine, epichlorohydrin modified
CATALOG NUMBER:	634
CAS NUMBER:	68307-89-1
DESCRIPTION:	Epichlorohydrin modified polyethyleneimine, 17% solids in water
FORMULA:	Unspecified

TYPICAL PROPERTIES:

Appearance:	Liquid
Base polymer Mw:	20,000
Density:	1.055
Pour point:	0°C
Viscosity:	10-100cp (25°C)
pH:	4.5

GENERAL INFORMATION: This modified polyethyleneimine has been used as an adhesion promotor in latex paint and adhesive formulations.

STRUCTURE:

X = Major component Cl, Minor component OH
R = H or continuation of polymer chain

Technical information and data regarding the composition, properties or use of the products described herein is believed reliable. However, no representation or warranty is made with respect thereto except as made by Sp² in writing at time of sale. Sp² cannot assume responsibility for any patent liability which may arise from the use of any product in a process, manner or formula not designed by Sp².